

MONTHLY MEMBERSHIP PROGRESS REPORT

District 325 G

Results as of: 11/30/2023

GMT:

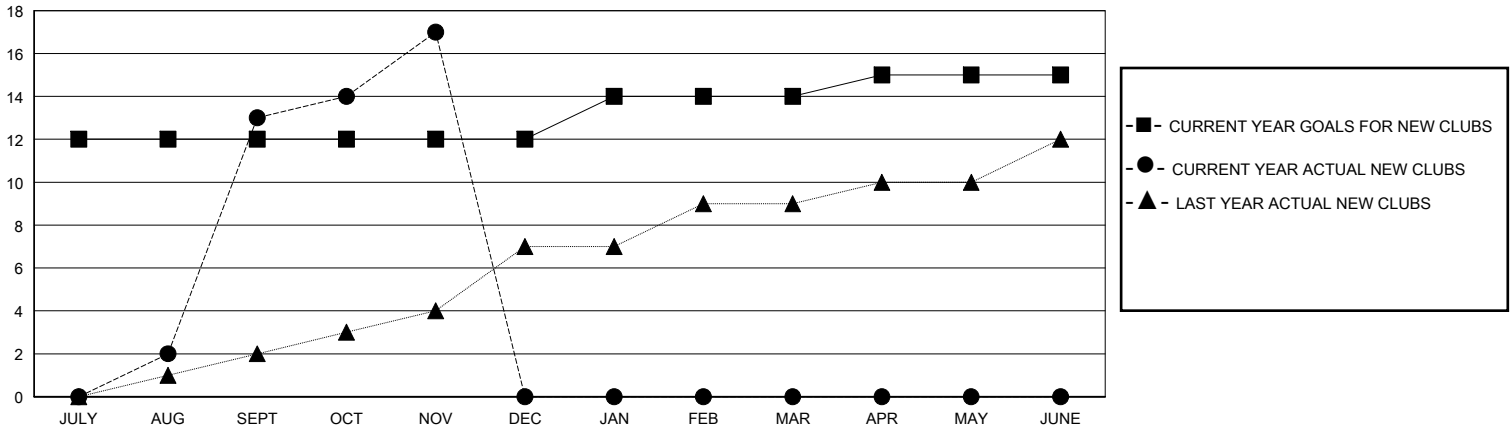
LOCATION NEPAL

GMT CA

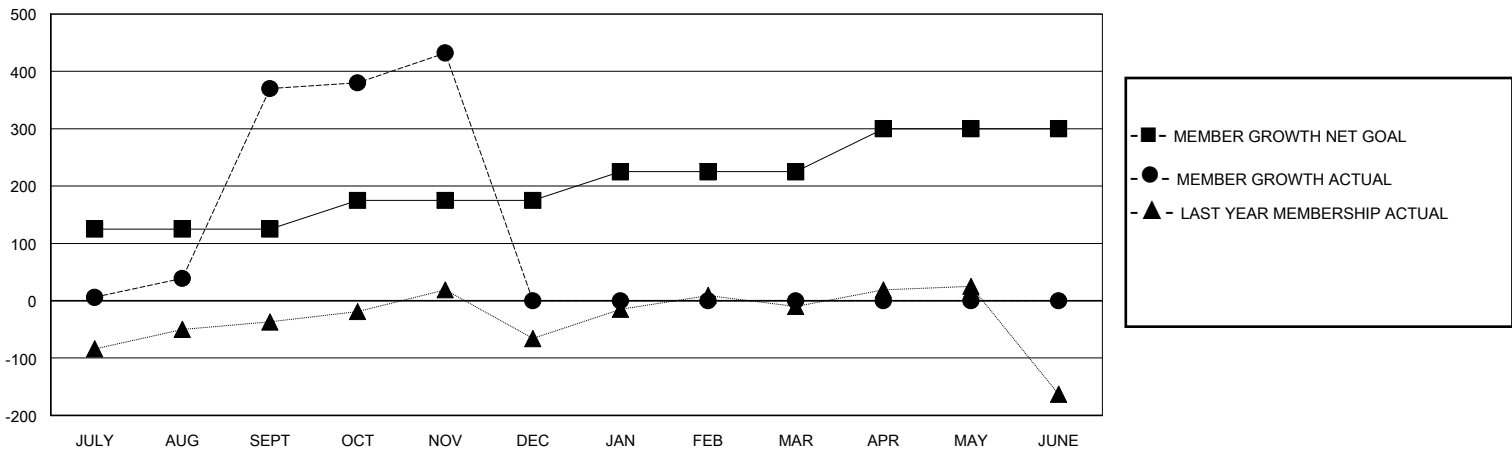
Clubs			
RESULTS FOR 2023-2024			
QUARTER	NEW CLUB GOAL	NEW CLUBS	DROPPED CLUBS
JULY/AUG/SEPT	12	13	4
OCT/NOV/DEC	0	4	1
JAN/FEB/MAR	2	0	0
APR/MAY/JUNE	1	0	0

Members			
RESULTS FOR 2023-2024			
QUARTER	MEMBER GROWTH NET GOAL	MEMBER GROWTH ACTUAL	DROPPED MEMBERS ACTUAL (including transfers)
JULY/AUG/SEPT	125	605	176
OCT/NOV/DEC	50	133	68
JAN/FEB/MAR	50	0	0
APR/MAY/JUNE	75	0	0

GOALS AND ACTUAL NEW CLUBS CUMULATIVE



GOALS AND ACTUAL MEMBERS CUMULATIVE



DROPPED CLUBS: 5

68 CLUBS OF 139 ADDED 1 OR MORE NEW MEMBERS

GENDER DISTRIBUTION

MALE 2,125 (65.95%)
FEMALE 1,090 (33.83%)

DROPPED MEMBERS

DECEASED	0
CLUB CANCELLED	86
OTHER	158
TOTAL	244

[CLICK HERE FOR CUMULATIVE MEMBERSHIP DATA](#)

TOTAL FAMILY UNIT MEMBERS	2,362
FAMILY MEMBERS PAYING HALF DUES	1,680